



N° :

Date : 8 août 2017

### Induction motor

4/8P LS 90L 1,1/0.22kW 400VY 50Hz B3 -

**Utilisation :** Environment Current ; Ambiance Non corrosive ; Finition - ; Zone Non specific ; Centrifugal applications ; Ambient temperature -16 +40 °C ; Maximum altitude 1000 m.

**Motor characteristics :** Aluminium alloy housing ; Cast iron DE endshield ; Aluminium alloy NDE endshield.



### Motor definition

Protection type	-	Application	Centrifugal applications
Generation code	-	Main voltage (V)	400
Efficiency class	-	Connection	2B
Number of network phases	3	Motor winding (V)	400VY
Number of speed	-	Rated Frequency (Hz)	50
Polarity	4/8P	Operation position	IM1001(IMB3)
Motor serie	LS	Index of protection	IP55
Frame size (mm)	90	Index of cooling	IC411
Length code	L	Insulation class	F
HS rated power (kW)	1.100	Finish	-
LS rated power (kW)	0.22	Moment of inertia J (kg.m <sup>2</sup> )	-
Rated speed (min-1)	1500/750	Motor weight (kg)	15.2
Maximum mechanical speed (min-1)	-		

### Common definitions

Paint shade	RAL6000
Paint system	la (1 polyurethane coat 20/30 microns)

### Motor mechanical interface

Mounting flange	-	Shaft material type	Steel shaft
Drive end shaft type	IEC STANDARD shaft end	Nuance of shaft material	-
Diameter DE shaft (mm)	24j6	Second shaft extension	-
Length DE shaft (mm)	50	Diameter NDE shaft (mm)	-
DE bearing mounting	Located	Second shaft end length (mm)	-
DE bearing type	DE ball bearing	NDE bearing type	NDE ball bearing
DE bearing	6205	NDE bearing	6204
Code Type de graissage	Vie		

### Motor electrical interface

Connection network type	Terminal box	Cable type	-
Connection network material	Composite materials	Cable gland material	Polyamide cable gland
Connection network position	A	Main cable gland type	2xPE ISO M20
Connection network orientation	up	Principal cable gland position	Right (1)
Connection network relative position	0		

N° :

Date : 8 août 2017

**Induction motor - 4/8P LS 90L 1,1/0.22kW 400VY 50Hz B3 -**

**Motor options**

Vibration level	A (25µm ; 1.6mm/s ; 2.5m/s <sup>2</sup> )	Cover	Plastic cover
Balancing type	Half-key (H)	Drip proof cover option	-
Impregnation type	< 95% ; -16+40°C (T)	cooling type	-
Winding thermal protection	-	Forced ventilation characteristics	-
Space heater	-	Encoder type	-
Draining plugs position	6H	Encoder characteristics	-
Nameplate material	Aluminium nameplate	Screw material	Steel screw
Endshield thermal protection	-	Adaptation for vibration sensor	-
Reinforced winding insulation	-		

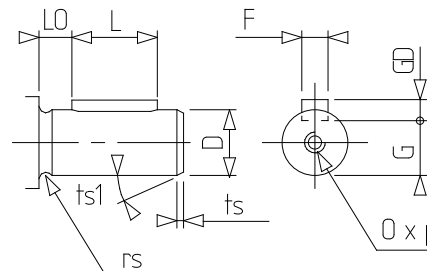
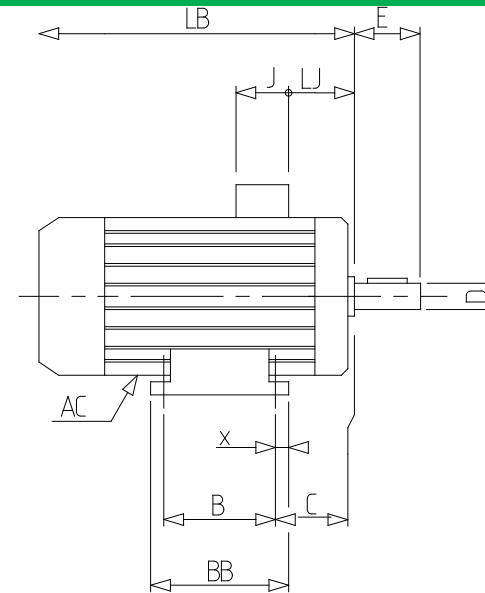
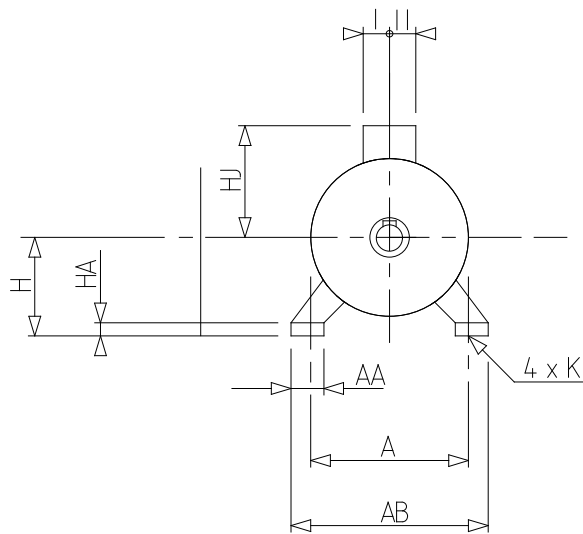
**Motor characteristics (on mains supply)**

Rated speed (min-1)	1500/750	Unload maximum starting frequency (d/h)	-
Rated current (A)	0.0/	Acoustic pressure level (dB(A))	48
No-load current (A)	-	Power factor at 4/4 of the load	/
Id / In	/	Power factor at 3/4 of the load	/
Rated torque (N.m)	7_2,8	Power factor at 2/4 of the load	/
Starting torque (N.m)	/	Efficiency at 4/4 (IEC 60 034-2-1) of the load (%)	
Maximum torque (N.m)	/	Efficiency at 3/4 (IEC 60 034-2-1) of the load (%)	
Average starting torque (N.m)	/	Efficiency at 2/4 (IEC 60 034-2-1) of the load (%)	
Rotor locked time (cold) (s)			

N° :

Date : 8 août 2017

Induction motor - 4/8P LS 90L 1,1/0.22kW 400VY 50Hz B3 -



A	140
AA	39
AB	172
AC	189.00
B	125
BB	164
C	56.0
D	24j6
E	50
F	8
G	20
GD	7
H	90
HA	11
HJ	135.0
I	43
II	43
J	86
K	10
L	40
LB	245.0
LJ	26.0
LO	6
O	M8
p	19
rs	0.5
ts	2
ts1	20
x	28