

N° :

Date : 6 avr. 2020

**Induction motor + options**

**4P LSPX 100L 2,2kW LS2/IE2 Ex II2D Ex tb IIIC T125°C Db V18 230VD/400VY 50Hz -**

Metal cover ; Drip cover ; 1 set of 3 probes PTC (winding) ; Draining plugs position DE

**Utilisation :** Environment ATEX standard - Dust ; Ambiance Non corrosive ; Finition - ; Zone 21 - Dusty ; Type of protection Ex II2D Ex tb IIIC T125°C Db ; General applications ; Ambient temperature -16 +40 °C ; Maximum altitude 1000 m ; Maximum surface temperature 125°C

**Motor characteristics :** Aluminium alloy housing ; Cast iron DE endshield ; Cast iron NDE endshield.



**Motor definition**

Protection type	Ex II2D Ex tb IIIC T125°C Db
Generation code	LS2
Efficiency class	IE2
Number of network phases	3
Number of speed	
Polarity	4P
Motor series	LSPX
Frame size (mm)	100
Length code	L
HS rated power (kW)	2.200
	-
Rated speed (min-1)	1440
Maximum mechanical speed (min-1)	

Application	General applications
Main voltage (V)	400
Connection	DY
Motor winding (V)	230VD/400VY
Rated Frequency (Hz)	50
Operation position	IM3611(IMV18)
Index of protection	IP65
Index of cooling	IC411
Insulation class	F
Finish	-
Moment of inertia J (kg.m <sup>2</sup> )	0.0053100
Motor weight (kg)	21.3

**Common definitions**

Paint shade	RAL1007
Paint system	C3L (1 x acrylic polyurethane finish (50µm +/- 20%))

**Motor mechanical interface**

Mounting flange	FT130
Drive end shaft type	IEC STANDARD shaft end
Diameter DE shaft (mm)	28j6
Length DE shaft (mm)	60
DE bearing mounting	Locked
DE bearing type	DE ball bearing
DE bearing	6206
Greasing type	Greased for life

Shaft material type	Steel shaft
Nuance of shaft material	-
Second shaft extension	-
Diameter NDE shaft (mm)	-
Second shaft end length (mm)	-
NDE bearing type	NDE ball bearing
NDE bearing	6205

**Motor electrical interface**

Connection network type	Terminal box
Connection network material	Aluminium alloy
Connection network position	A
Connection network orientation	front
Connection network relative position	0

Cable type	-
Cable gland material	Cable gland not supplied, holes tapped with polyamide plugs
Main cable gland type	1xM20 ; With plugs
Principal cable gland position	Right (1)

N° :

Date : 6 avr. 2020

Induction motor + options - 4P LSPX 100L 2,2kW LS2/IE2 Ex II2D Ex tb IIIC T125°C Db V18 230VD/400VY 50Hz -

**Motor options**

Vibration level	A (25µm ; 1.6mm/s ; 2.5m/s <sup>2</sup> )	Cover	Metal cover
Balancing type	Half-key (H)	Drip proof cover option	Drip cover
Impregnation type	< 95% ; -16+40°C (T)	cooling type	-
Winding thermal protection	1 set of 3 probes PTC (winding)	Forced ventilation characteristics	-
Space heater	-	Encoder type	-
Draining plugs position	DE	Encoder characteristic	-
Nameplate material	Aluminium nameplate	Screw material	Steel screw
End-shield thermal protection	-	Adaptation for vibration sensor	-
Reinforced insulation system	-		

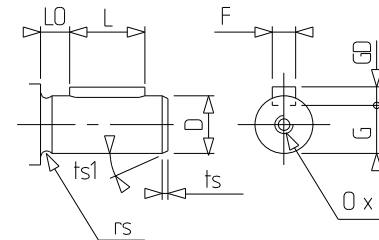
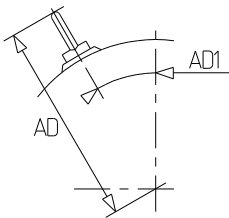
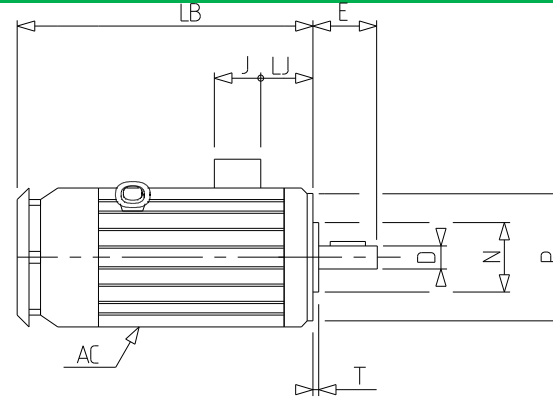
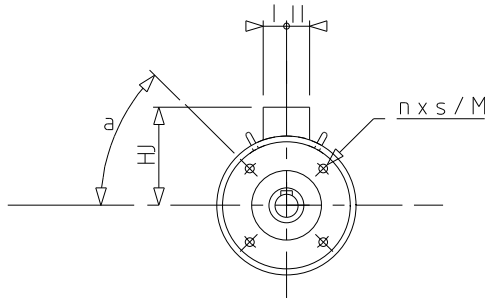
**Motor characteristics (on mains supply)**

Rated speed (min-1)	1440	Unload maximum starting frequency (d/h)	-
Rated current (A)	4.6	Acoustic pressure level (dB(A))	48
No-load current (A)	-	Power factor at 4/4 of the load	0,82
Id / In	6.65	Power factor at 3/4 of the load	0,74
Rated torque (N.m)	14,6	Power factor at 2/4 of the load	0,63
Starting torque (N.m)	37.96	Efficiency at 4/4 (IEC 60 034-2-1) of the load (%)	84.70
Maximum torque (N.m)	39,56	Efficiency at 3/4 (IEC 60 034-2-1) of the load (%)	85.90
Average starting torque (N.m)		Efficiency at 2/4 (IEC 60 034-2-1) of the load (%)	86.10
Rotor locked time (cold) (s)			

N° :

Date : 6 avr. 2020

Induction motor + options - 4P LSPX 100L 2,2kW LS2/IE2 Ex II2D Ex tb IIIC T125°C Db V18 230VD/400VY 50Hz -



<b>a</b>	45
<b>AC</b>	200.00
<b>D</b>	28j6
<b>DTP</b>	182
<b>E</b>	60
<b>F</b>	8
<b>G</b>	24
<b>GD</b>	7
<b>HJ</b>	142.0
<b>I</b>	53
<b>II</b>	53
<b>J</b>	90
<b>L</b>	50
<b>LB</b>	310.0
<b>LJ</b>	23.5
<b>LO</b>	6
<b>M</b>	130
<b>N</b>	110
<b>n</b>	4
<b>O</b>	M10
<b>P</b>	160
<b>p</b>	22
<b>rs</b>	0.5
<b>S</b>	M8
<b>T</b>	3.5
<b>ts</b>	2
<b>ts1</b>	20